

- Overview**

This program allows products and jobs to be viewed in a grid, providing search functions, and the ability to view boms, view trailers, and search for purchase orders.

There are numerous ways to search for data by using in grid filters or more complex searches on multiple fields.

When the viewer is opened, it will be in Product or Job mode. This provides the source list for searches.

There are a number of option buttons available at the bottom of the screen which provide various functions. There are also right click options within the grid for quick find and filtering.

The grid will display in the last format you used. If you would like to return to the standard grid click on the Restore Layout button.

Product Code	Title	Length	Width	Height	Plate	Dim	Bin No	Supplier Name	Supp Part No	dwgNo	Group Name
0002	SW MANIFOLD	1.000	2.000	5.000			123			x	AA-NFS-OTH
0003	SUPPLIER	1.500	2.000	3.000							AA-NFS-OTH
0004	SEW Fyzzzy	0.100	0.050	2.000	09PLT1					1	STEEL-CUT
0005	SFG	0.121	0.120	0.050	08PLT1	L				12	STEEL-CUT
0006	FDSG	1.300	0.900		10PLT1	P				15	STEEL-CUT
020F050080	REMOVEABLE LOCK PIN STOP dd a...	0.080			020FMS05			DRAKE GUILLOT...		31	STEEL-CUT
020F100400	GRIP BAR 20 x 10 FLAT x 400mm	0.400			020FMS10			SHAPECUT PTY ...	dd	06	STEEL-CUT
020FMS10	FLAT MILD STEEL 20 x 10							SOUTHERN QU...			Raw Material
025F030011	KEY SOCKET AXLE NUT	0.011			025FMS03			DRAKE GUILLOT...		03	STEEL-CUT
025F050042	RAM RETAINER STOP	0.042			025FMS05			DRAKE GUILLOT...		31	STEEL-CUT
025F050065	GREASE POD HOLDER Item 03abc	0.055			025FMS05			DRAKE GUILLOT...		03	STEEL-CUT
025F050100	MOUNTING BRACKET x 100mm1122 ...	0.100			025FMS05	D					New Cut List
025F050250	REAR DECK EDGE	0.250			025FMS05			DRAKE GUILLOT...		38	STEEL-CUT
025F050375	GREASE POD HOLDER Item 06	0.375			025FMS05			DRAKE GUILLOT...		06	STEEL-CUT
025F051140	DUNNAGE TRAY FLOOR SUPPORT ...	1.140			025FMS05			DRAKE GUILLOT...		04	STEEL-CUT
025F060065	TYRE CHANGE PIN FLAT BAR	0.065			025FMS06			DRAKE GUILLOT...		01	STEEL-CUT
025F060195	SPRING BRACKET - For CK4131 MD...	0.195			025FMS06	D					New Cut List
025F100010	STOP - SUPPORT PLATE - JIB SUPP...	0.010			025FMS10			SHAPECUT PTY ...			STEEL-CUT
025F100090	LANDING LEG VERTICAL LEG GUSS...	0.050	0.025		025FMS10	W		DRAKE GUILLOT...		66	STEEL-CUT
025F100083	BUMPER TO MAIN BEAM PACKER ...	0.083			025FMS10			DRAKE GUILLOT...		626	STEEL-CUT
025F100150	REAR T/LOCK SUPPORT	0.150			025FMS10			DRAKE GUILLOT...		627	STEEL-CUT
025F100255	REAR DECK STIFFENER @ TRANSI...	0.255			025FMS10			DRAKE GUILLOT...		626	STEEL-CUT
025F100400	GRIP BAR	0.400			025FMS10			DRAKE GUILLOT...		632	STEEL-CUT
025F100450	REAR DECK STIFFENER @ TRANSI...	0.450			025FMS10			DRAKE GUILLOT...		625	STEEL-CUT
025F100500	GRIP BAR	0.500			025FMS10			DRAKE BANDSA...		03	STEEL-CUT
025F101360	TURNTABLE SUPPORT GUIDE	1.360			025FMS10		PG425 ...	DRAKE GUILLOT...		610	STEEL-CUT

• **Right Click Grid Functions**

You can search on specific items on a grid by right click when the mouse pointer is anywhere in the column you want to search and then select one of the following:

- Filter - will display only the rows that match the cell you are on.
- Remove Filter - will redisplay all rows in the grid.
- Find - will ask again to enter something to search for in this column.
- Find Next (F5) - will search again for the same characters you have just searched for.

Product Code	Title	Length	Width	Height	Plate	Dim	Bin No	Supplier Name	Supp Part No	dwgNo	Group Name	Price 1	Price 2	Price 3	UOM
0006	FDSG	1.300	0.900	10PLT1	P...					15	STEEL-CUT	266.32	314.74	363.17	Each
10T00570230	GUSSET_TWISTLOCK SUPPORT_R...	0.057	0.230	0.005	10PLT1	L...		SHAPECUT PTY...		67	STEEL-CUT				Each
10T00700095	PIN LUG GUSSET	0.070	0.056	10PLT1				SHAPECUT PTY...		5	STEEL-CUT				Each
10T010000100	TOOLBOX WALL GUSSET	0.100	0.100	10PLT1				SHAPECUT PTY...		611	STEEL-CUT	4.95	5.85	7.20	Each
10T011500115	HOOK TO X-MEM GUSSET	0.115	0.115	10PLT1				SHAPECUT PTY...		610	STEEL-CUT	5.02	5.94	7.31	Each
10T01200120	INNER BEAM BOTT FLANGE GUSSE...	0.120	0.120	10PLT1				SHAPECUT PTY...		64	STEEL-CUT				Each
10T01250118	SUSP RAM TOP CARRIER TOP PLA...	0.125	0.118	10PLT1				SHAPECUT PTY...		61	STEEL-CUT	8.67	10.25	12.61	EACH
10T01350080	LOW PROFILE SKID PL FOOT FLAN...	0.135	0.080	10PLT1				SHAPECUT PTY...		61	STEEL-CUT	3.19	3.77	4.95	EACH
10T01400100	DOLLY JACKING PLATE	0.140	0.100	10PLT1				SHAPECUT PTY...		01	STEEL-CUT				Each
10T01430090	MAINBEAM END PLATE	0.143	0.090	10PLT1				SHAPECUT PTY...		9	STEEL-CUT				Each
10T01500075	10 PLATE T1 150 x 75	0.150	0.075	10PLT1				SHAPECUT PTY...		X10008.02	STEEL-CUT				Each
10T01500090	W/BEAM END PL	0.150	0.090	10PLT1				SHAPECUT PTY...		65	STEEL-CUT				Each
10T01500100	BUMPER BOX STIFFENER	0.150	0.100	10PLT1	W...			SHAPECUT PTY...		69	STEEL-CUT	3.46	4.09	5.03	Each
10T01500110	ITEM #69 10T1 100/0 150	0.150	0.100	10PLT1	W...			SHAPECUT PTY...		69	OUTSIDE LABOUR				Each
10T01500120	ROCKER END PLATE	0.150	0.120	10PLT1				SHAPECUT PTY...		620	STEEL-CUT				Each
10T01500127	ROCKER END PLATE	0.150	0.127	10PLT1				SHAPECUT PTY...		620	STEEL-CUT	5.95	7.03	8.66	EACH
10T01500150	10 PLATE T1 150 x 150	0.150	0.150	10PLT1				SHAPECUT PTY...		X10008.01	STEEL-CUT				Each
10T01570130	STIFFENER BUMP STOP	0.157	0.130	10PLT1				SHAPECUT PTY...		06	STEEL-CUT				Each
10T01600160	REAR DECK TO B/TAIL GUSSET	0.160	0.160	10PLT1	L...			SHAPECUT PTY...		615	STEEL-CUT	5.90	6.98	8.59	Each
10T01740050	BELLCRANK ANCHOR SUPPORT	0.174	0.090	10PLT1				SHAPECUT PTY...		67	STEEL-CUT	1.98	2.34	2.70	Each
10T01750090	2x8 M/BEAM END PL	0.175	0.090	10PLT1			PG350	SHAPECUT PTY...		65	STEEL-CUT	4.96	5.87	7.22	EACH
10T01800125	REAR DECK RIB GUSSET	0.180	0.125	10PLT1	W...			SHAPECUT PTY...		610	STEEL-CUT	5.12	6.05	6.98	EACH
10T01800150	FOOT BOTTOM	0.180	0.150	10PLT1				SHAPECUT PTY...		62	STEEL-CUT	7.99	9.44	11.62	Each
10T01800180	INNER BUMPER & X-MEMBER WEA...	0.180	0.180	10PLT1			PA690	SHAPECUT PTY...		63	STEEL-CUT	9.56	11.30	13.91	EACH
10T01800180	INNER BUMPER & X-MEMBER WEA...	0.180	0.180	10PLT1				SHAPECUT PTY...		68	STEEL-CUT	8.44	9.98	12.28	EACH
10T01950180	FRONT DK X-MEM TOP FLNG EXT G404...	0.180	0.190	10PLT1				SHAPECUT PTY...		61	STEEL-CUT	9.98	11.79	14.51	EACH
10T01950180	F/DECK X-MEM INNER TOP FLANGE...	0.195	0.180	10PLT1				SHAPECUT PTY...		61	STEEL-CUT	10.08	11.91	14.66	EACH
10T02000200	GUSSET_LINK REAR PIN - S/WIDE ...	0.200	0.200	10PLT1				SHAPECUT PTY...		60	STEEL-CUT				Each
10T02100175	CENTRE GUSSET	0.210	0.175	0.010	10PLT1	L...		SHAPECUT PTY...		02	STEEL-CUT	8.48	10.02	12.33	Each
10T02140120	WIDENING RAM LUG EXT'N STRAP ...	0.214	0.120	0.187	10PLT1	L...		SHAPECUT PTY...		61	STEEL-CUT				Each
10T02200150	STIFFENER DECK WEB	0.220	0.150	10PLT1				SHAPECUT PTY...		63	STEEL-CUT				Each
10T02400025	EDGE FLANGE	0.240	0.025	10PLT1				SHAPECUT PTY...		61	STEEL-CUT	1.38	1.64	2.01	Each
10T02400160	SUSP HANGER BASE PLATE	0.240	0.160	10PLT1				SHAPECUT PTY...		65	STEEL-CUT				Each
10T02450040	WIDENING RAM LUG EXT'N STRAP ...	0.245	0.040	0.200	10PLT1	L...		SHAPECUT PTY...		65	STEEL-CUT				Each
10T02500150	ROCKER END PLATE	0.250	0.150	10PLT1				SHAPECUT PTY...		621	STEEL-CUT	10.74	12.69	15.62	EACH
10T02500150	ROCKER BOSS STIFFENER	0.265	0.150	10PLT1				SHAPECUT PTY...		63	STEEL-CUT	11.37	13.44	16.54	Each
10T02670175	FRONT GUSSET	0.267	0.175	0.054	10PLT1	L...		SHAPECUT PTY...		03	STEEL-CUT	25.76	30.45	37.47	Each
10T02700100	G/NECK TOP & BOTTOM FLANGE G...	0.270	0.100	10PLT1	W...			SHAPECUT PTY...		612	STEEL-CUT				Each
10T02700170	STIFFENER_TW/LOCK SUPPORT_L...	0.270	0.170	10PLT1				SHAPECUT PTY...		63	STEEL-CUT				Each
10T02700190	STIFFENER_TW/LOCK SUPPORT_R...	0.270	0.190	10PLT1				SHAPECUT PTY...		64	STEEL-CUT				Each
10T02800070	G/N TO FRAME TRANSITION GUSSE...	0.280	0.070	0.130	10PLT1	L...		SHAPECUT PTY...		64	STEEL-CUT				Each
10T02900075	INNER FRAMING REAR BOTTOM PL...	0.290	0.075	10PLT1				SHAPECUT PTY...		69	STIFFI CUT	4.78	5.65	6.50	Each

When a filter is active, the heading line will show the number of rows in the selection. You can use the filter again in a grid that already has an active filter. This allows you to further reduce the results with single clicks.

DTViewer - Inventory 20 records found

Drag a column header here to group by that column.

Product Code	Title	Length	Width	Height	Plate	Dim	Bin No	Supplier Name	Supp Part No	dwgNo	Group Name	Price 1	Price 2	Price 3	UGM
1010125016	SUSP RAM TOP CARRIER TOP PL...	0.125	0.116	10PL11	...			SHAPEOUT PTY.		61	STEEL CUT	8.67	19.25	12.61	EACH
1010100100	FRONT DECK X MEM TOP FLANGE	0.190	0.190	10PL11	...			SHAPEOUT PTY.		61	STEEL CUT	9.30	11.75	14.51	EACH
1010195010	FRONT DECK X MEM INNER TOP FLANGE	0.195	0.190	10PL11	...			SHAPEOUT PTY.		61	STEEL CUT	10.08	11.91	14.66	EACH
1010214010	WORKING RAM LUGS EXTN STRAP...	0.274	0.120	10PL11	...			SHAPEOUT PTY.		61	STEEL CUT				EACH
1010200005	EDGE FLANGE	0.240	0.025	10PL11	...			SHAPEOUT PTY.		61	STEEL CUT	1.38	1.64	2.01	EACH
1010210000	END PLATE RIB FLANGE	0.370	0.000	10PL11	...			SHAPEOUT PTY.		61	STEEL CUT	5.34	7.02	8.64	EACH
1010495016	LOWER TOW LUGS STIFFENER	0.445	0.165	10PL11	...			SHAPEOUT PTY.		61	STEEL CUT				EACH
1010200000	END PLATE DECK BEAM	0.520	0.300	10PL11	...			SHAPEOUT PTY.		61	STEEL CUT				EACH
1010250105	LOWER TOW LUGS STIFFENER	0.575	0.165	10PL11	...			SHAPEOUT PTY.		61	STEEL CUT	21.89	25.87	31.94	EACH
1010800005	TRIAL DECK PLATE	0.950	0.350	10PL11	...			SHAPEOUT PTY.		61	STEEL CUT				EACH
1013200460	CTR SECTION REAR TOP FLANGE	3.320	0.480	10PL11	...			SHAPEOUT PTY.		61	STEEL CUT	453.42	536.97	618.32	EACH
1013200460	CENTRE SECTION REAR TOP FLAN...	3.320	0.480	10PL11	...			SHAPEOUT PTY.		61	STEEL CUT	368.20	438.15	502.10	EACH
1013000100	TOP FLANGE	3.600	0.150	10PL11	...			SHAPEOUT PTY.		61	STEEL CUT	149.09	178.19	216.65	EACH
1013780040	CENTRE SECTION REAR TOP FLAN...	3.750	0.480	10PL11	...			SHAPEOUT PTY.		61	STEEL CUT				EACH
1014000460	WDR DD CTR SECTION REAR TOP...	4.040	0.480	10PL11	...			SHAPEOUT PTY.		61	STEEL CUT	561.75	652.00	752.41	EACH
1014100100	FRONT CUMMING BOTTOM FLANGE	4.105	0.100	10PL11	...			SHAPEOUT PTY.		61	STEEL CUT	34.69	111.90	137.73	EACH
1015240010	FRONT CUMMING BOTTOM FLANGE	5.240	0.100	10PL11	...			SHAPEOUT PTY.		61	STEEL CUT	126.94	150.02	184.64	EACH
1016400460	MAIN BEAM REAR TOP FLANGE	5.640	0.480	10PL11	...			SHAPEOUT PTY.		61	STEEL CUT	649.31	767.36	944.44	EACH
1016800100	SUTER CUMMING BOTTOM FLANGE	5.945	0.100	10PL11	...			SHAPEOUT PTY.		61	STEEL CUT				EACH

• **Sample of Sorting Capabilities**

The grids have the ability for grouping. You can drag one or more column headers and drop it into the “Group By Box” and the detail is then grouped by the chosen field. Click on the + to drill down with one level of grouping. The number of rows in each group is displayed on the group header.

When a record is added or updated, it will be placed in it’s proper position based on the current group/sort settings.

You can also sort the grid by clicking on the column heading. Clicking again on the same heading will reverse the sorting e.g. in ascending or descending order.

DTViewer - Inventory

Plate /

Product Code	Title	Length	Width	Height	Plate /	Dim	Bin No	Supplier Name	Supp Part No	dwgNo	Group Nar
+ [14372 rows]											
+ 0 [2 rows]											
+ 01 [7 rows]											
+ 020FMS05 [1 rows]											
+ 020FMS10 [1 rows]											
+ 025FMS03 [2 rows]											
+ 025FMS06 [12 rows]											
025F00055	GREASE POD HOLDER Item 03abc	0.095			025FMS06	03	STEEL CL
025F00042	RAM RETAINER STOP	0.042			025FMS05	31	STEEL CL
C1030.36	DECK EDGE	0.401			025FMS05	D		36	STEEL CL
025F01140	DUNNAGE TRAY FLOOR SUPPORT	1.140			025FMS05	04	STEEL CL
025F02050	REAR DECK EDGE	0.250			025FMS05	38	STEEL CL
025F03075	GREASE POD HOLDER Item 06	0.375			025FMS05	06	STEEL CL
025F05010	MOUNTING BRACKET x 100mm1122...	0.100			025FMS05	D		07	New CatL
C1046.07	GREASE POD HOLDER Item 07 See...	0.205			025FMS05	D		07	STEEL CL
GL62	WDR FUEL CAP TONGUE	0.050			025FMS05	...	FB130	07	STEEL CL
GL25	WDR AXLE PACKER PL 25 x 127 GL2.	0.127			025FMS05	...	FB390	GL25	STEEL CL
GL06	WDR SUSP PIN LOCKIN TAB	0.075			025FMS05	...	FG060	GL06	WDR HVC
GL04	WDR SUSP RAM PIN LOCKIN TAB	0.060			025FMS05	...	FG070	GL04	STEEL CL
+ 025FMS06 [2 rows]											
+ 025FMS10 [23 rows]											
+ 025FMS12 [3 rows]											
+ 02PLMS [2 rows]											
+ 03CHCK [1 rows]											
+ 03PLMS [47 rows]											
+ 040FMS06 [5 rows]											

You can rearrange the columns across the page by dragging and dropping a column into a new location on the grid.

• **Search Functions**

The search button allows you to enter multiple selection criteria against one or more fields in the grid. You can select a comparison where the search value is Contained, Equal to (=), Greater than (>), Greater than or Equal (>=), Less than (<), Less than or Equal (<=), Between or Not Equal.

The between allows for 2 search values.

Column	Comparison	Search Value 1	Search Value 2
Product Code	Containing		
Title	Comparison		
Length	=		
Width	>		
Height	>=		
Plate	<		
Dim	<=		
Bin No	Containing		
Supplier Name	Between		
Supp Part No	Not =		
dwgNo			
Group Name			
Price 1			
Price 2			
Price 3			
UOM			
Purch UOM			
QOH			
Supplier			
Ext Part No			
Lead Time			
Alt Part			
Reorder Qty			
Maxstk			
Sort Code			
On Purchase Order			
On Customer Order			
Inactive			
Last Cost			
Last Qty			
Waste			
Instr			
Steel Bom			
Pieces			

Once you have entered your criteria click search and the main viewer grid will display the results. This window will remain active to allow for the searches. Clicking Clear will clear any comparison you have entered. Clicking Return will restore the viewer grid to all items on file.

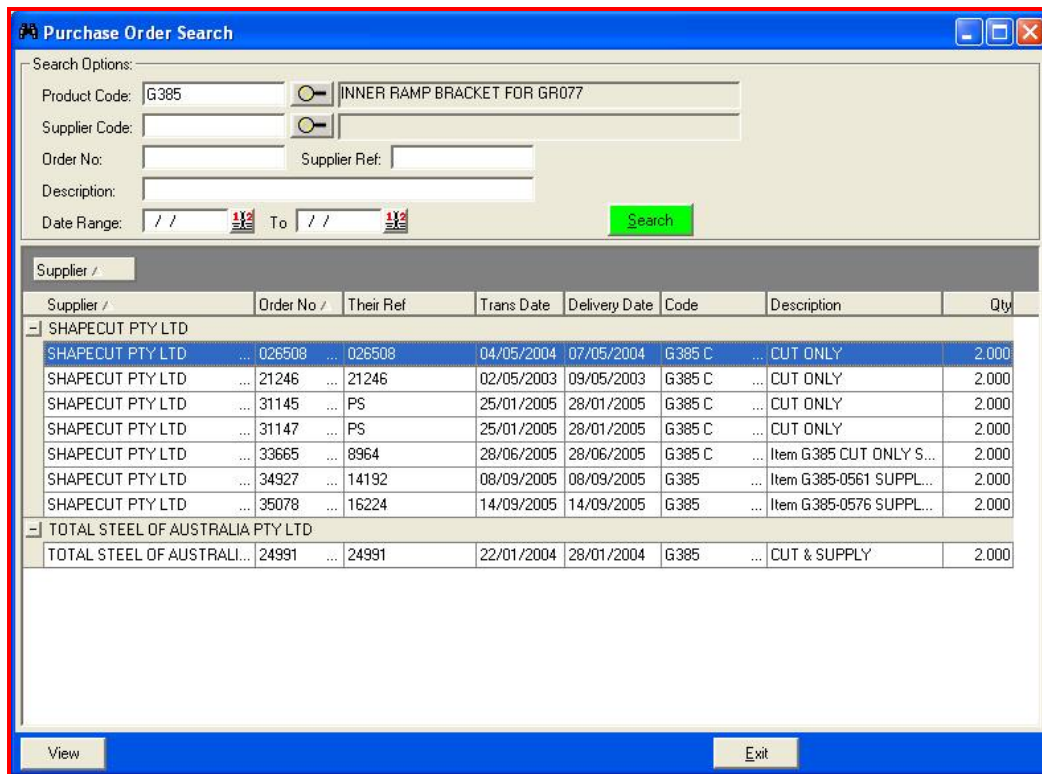
View

Clicking the view button will start the Vision viewer and display the product or job that you currently have highlighted in the grid.

- **Purchase Orders**

Click the purchase order button to start an order search. The grid will display orders that match the current criteria after you click the Search button. You can enter data into multiple fields and this will reduce the results in the order grid.

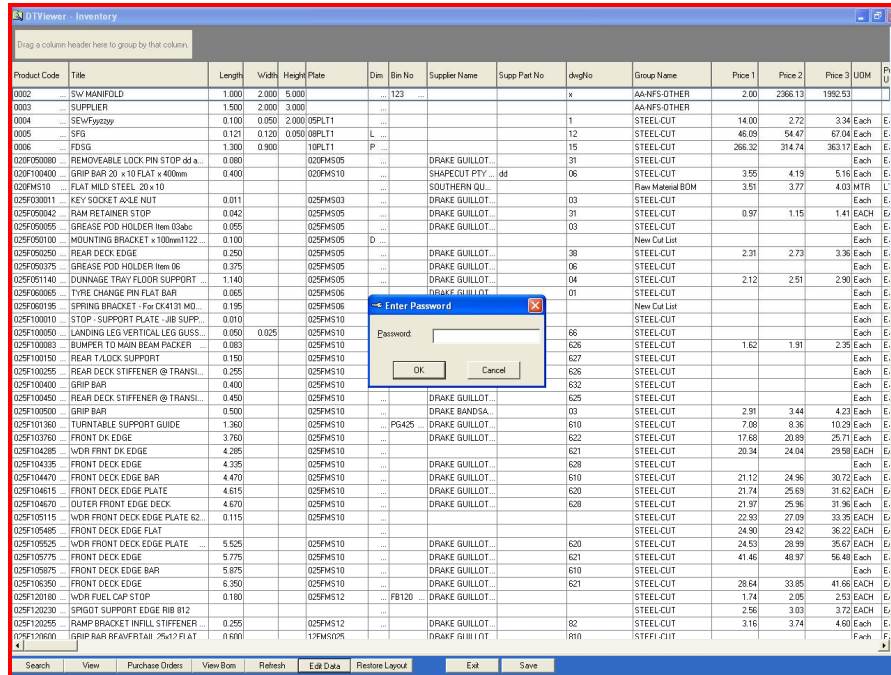
If you enter details into the description field, the content of each line on the orders will be searched e.g. Enter the word G385-0561 and all order lines that contain the word G385-0561 will be found.



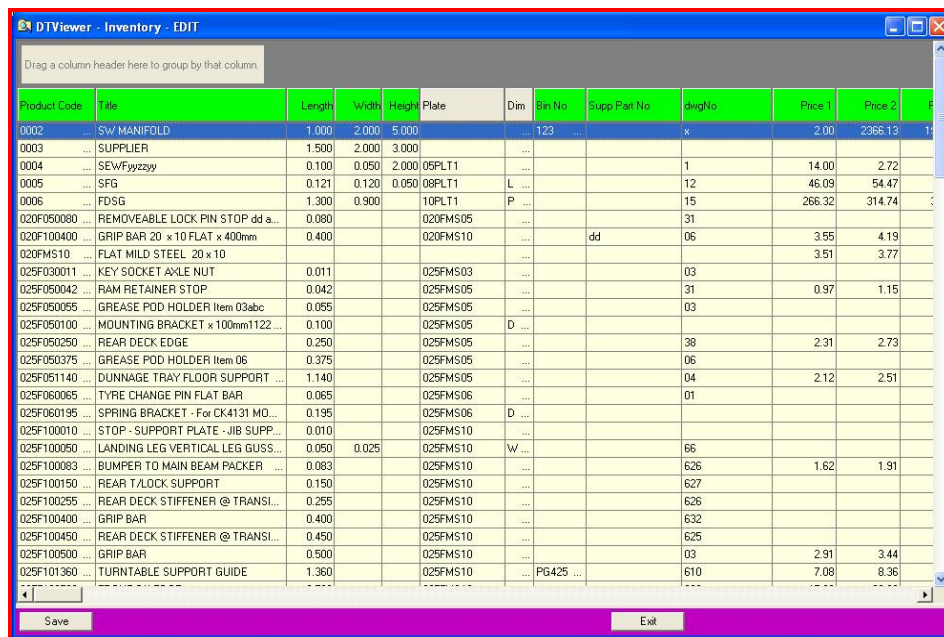
Click View to display the highlighted purchase order in a printable format.

• **Edit Data**

Click the Edit data button to put the viewer grid into edit mode. This mode is password protected.



If you have access to this option, the existing grid will be redisplayed in edit mode where columns that can be changed have a green heading. Once changes have been made you must click SAVE to update the product and associated BOM and Master list information. Click Exit to return to viewer or mode.



• **Job Viewer**

The job viewer uses the same option as the Inventory viewer with the addition of having access to the Trailer and Work order maintenance program.

Click on the View Trailer button to open the currently selected job via the Trailer Maintenance program.

Job No	Title	Started	Est Completion	Date Completed	Customer Name	Group Name	S/C	Modal Description	Serial No	VIN
05-67	DOOLAN'S HEAVY HAULAGE 4 x 4 D...	12/11/2004	09/09/2005		DOOLAN'S HEAVY HAULAGE	Drake Trailers		4 x 4 DECK WIDENER LD 15" CPA-11325	44379	6T9T234BF50
05-68	R.B. RUSSELL HAULAGE 2 x 8 DOLL...	17/08/2005	06/02/2006		R.B. RUSSELL T/PORT P/L	Drake Trailers		2 x 8 DOLLY CPA-9350	282070	6T9T234BF50
05-69	MILBRAE QUARRIES 2 x 4 15" DOLL...	17/08/2005	06/02/2006		MILBRAE QUARRIES PTY LTD	Drake Trailers		2 x 4 15" DOLLY CPA-6601	243010	6T9T234BF50
05-70	GRADCO 2x4 DOLLY	17/08/2005	06/02/2006		GRADCO	Drake Trailers		2 x 4 15" DOLLY CPA-6601	243030	6T9T234BF50
05-71	NORTH QLD HEAVY HAULAGE 4 x 4 ...	17/08/2005	06/02/2006		NORTH QLD HEAVY HAULAGE	Drake Trailers		4 x 4 FULL WIDENER LD 20" CPA-11325	44378	6T9T254BF50
05-72	NORTH QLD HEAVY HAULAGE 2 x 4 ...	17/08/2005	06/02/2006		NORTH QLD HEAVY HAULAGE	Drake Trailers		2 x 4 20" DOLLY CPA-6601	242940	6T9T234BF50
05-73	ANDREWS & SONS E/MOVING 3 x 4 ...	17/08/2005	06/02/2006		ANDREWS & SONS E/MOVING	Drake Trailers		3 x 4 DECK WIDENER LD 20" CPA-11324	34320	6T9T254BF50
05-74	DOOLAN'S HEAVY HAULAGE 4 x 8 D...	17/08/2005	06/02/2006		DOOLAN'S HEAVY HAULAGE	Drake Trailers		4 x 8 DD S/WING ENCLOSED DECK CPA-11325	48182	6T9T254BF50
05-75	GLENGRANT CIVIL P/L 4 x 4 FULL W...	04/06/2004	16/12/2004	21/03/2006	GLENGRANT CIVIL P/L	Drake Trailers		4 x 4 FULL WIDENER LD 20" CPA-11325	44389	6T9T254BF50
05-75-01W...	Weld Crack Repairs	17/01/2007	18/01/2007		GLENGRANT CIVIL P/L	Drake Trailers				
05-76	PATLIN TRANSPORT 4 x 4 DECK WIL...	04/06/2004	16/12/2004	21/03/2006	PATLIN TRANSPORT	Drake Trailers		4 x 4 DECK WIDENER LD 15" CPA-11325	44390	6T9T254BF50
05-77	WESCOMBE HEAVY HAULAGE 2 x 8 ...	04/06/2004	16/12/2004		WESCOMBE HEAVY HAULAGE	Drake Trailers		2 x 8 DOLLY CPA-9350	282130	6T9T234BF50
05-78	VON DREHNEN TRANSPORT 3 x 4 F...	04/06/2004	16/12/2004		VON DREHNEN TRANSPORT PTY LTD	Drake Trailers		3 x 4 FULL WIDENER LD 15" CPA-11324	34318	6T9T254BF50
05-79	LEO FARDELL E/MOVING P/L 4 x 4 ...	04/06/2004	16/12/2004		LEO FARDELL E/MOVING P/L	Drake Trailers		4 x 4 DECK WIDENER LD 15" CPA-11325	44380	6T9T254BF50
05-80	EXTONS P/L 3 x 4 DECK WIDENER...	04/06/2004	16/12/2004		EXTONS P/L	Drake Trailers		3 x 4 DECK WIDENER DD 19.5" CPA-11324	34321	6T9T254BF50
05-81	TIPPETT HEAVY HAULAGE 4 x 4 DE...	04/06/2004	16/12/2004		TIPPETT HEAVY HAULAGE	Drake Trailers		4 x 4 DECK WIDENER LD 15" CPA-11325	44381	6T9T254BF50
05-82	OSTWALD 3x8 S/WING	04/06/2004	16/12/2004		OSTWALD BROS PTY LTD	Drake Trailers		3 x 8 LD S/WING ENCLOSED DECK CPA-11324	38116	6T9T254BF50
05-82-01	Remote Control Box	30/01/2007	02/02/2007		OSTWALD BROS PTY LTD	Drake Trailers				
05-83	BARMINCO PTY LTD 2 x 8 DOLLY	04/06/2004	16/12/2004		BARMINCO PTY LTD	Drake Trailers		2 x 8 DOLLY CPA-9350	281930	6T9T234BF50
05-84	DM DRAINAGE & CONSTRUCTION P...	04/06/2004	16/12/2004		DM DRAINAGE & CONSTRUCTION P/L	Drake Trailers		4 x 4 FULL WIDENER LD 15" CPA-11325	44382	6T9T254BF50
05-85	HI-HAUL 3 x 8 DD	04/06/2004	16/12/2004		HI-HAUL TRANSPORT	Drake Trailers		3 x 8 DD S/WING ENCLOSED DECK CPA-11324	38113	6T9T254BF50
05-86	MACTRANS HEAVY HAULAGE 2 x 4 ...	04/06/2004	16/12/2004		MACTRANS HEAVY HAULAGE	Drake Trailers		2 x 4 15" DOLLY CPA-6601	242950	6T9T234BF50
05-87	DRAKE SPARE2 x 8 DOL	04/06/2004	16/12/2004	27/03/2006	DRAKE TRAILERS	Drake Trailers		2 x 8 DOLLY CPA-9350	282010	6T9T234BF50
05-88	RJ & JM THOMPSON EXCAV & E/MO...	04/06/2004	16/12/2004		RJ & JM THOMPSON EXCAV & E/MOVING	Drake Trailers		4 x 4 FULL WIDENER LD 15" CPA-11325	44382	6T9T254BF50
05-89	GRADCO 4 x 4 DECK WIDENER LD 1...	04/06/2004	16/12/2004		GRADCO	Drake Trailers		4 x 4 DECK WIDENER LD 15" CPA-11325	44386	6T9T254BF50
05-90	ROD PILON TRANSPORT 3 x 8 DD S...	04/06/2004	16/12/2004		ROD PILON TRANSPORT	Drake Trailers		3 x 8 DD S/WING ENCLOSED DECK CPA-11324	38114	6T9T254BF50
05-91	H/HAULAGE QLD 4x4 WID	04/06/2004	16/12/2004		H/HAULAGE QLD (T/MILLE INDUST HOL)	Drake Trailers		4 x 4 FULL WIDENER LD 15" CPA-11325	44383	6T9T254BF50
05-92	H/HAULAGE QLD 3x4 WID	01/05/2005	20/12/2005		H/HAULAGE QLD (T/MILLE INDUST HOL)	Drake Trailers		3 x 4 FULL WIDENER LD 15" CPA-11324	34319	6T9T254BF50
05-93	PILBARA 6x8/LH STEERABLE TR	26/08/2004	22/12/2005		PILBARA IRON COMPANY (SERVICES) P/L	Drake Trailers		STEERABLE	68294/68	6T9T254BF50
05-93-01W...	GROENEVELD TIMER	15/12/2006	15/12/2006		PILBARA IRON COMPANY (SERVICES) P/L	Drake Trailers				
05-93A	PILBARA IRON COMPANY (SERVICE...	26/08/2004	22/12/2005		PILBARA IRON COMPANY (SERVICES) P/L	Drake Trailers				
05-94	PILBARA IRON PTY LTD 2x8 dolly	26/08/2004	22/12/2005		PILBARA IRON COMPANY (SERVICES) P/L	Drake Trailers		2 x 8 DOLLY CPA-9350	282150	6T9T234BF50
05-95	DRAKE SPARE 3x8 DD	26/08/2004	22/12/2005	22/03/2006	DRAKE TRAILERS	Drake Trailers				
05-HENRY...	HENRY PLANT AND EQUIPMENT 3 x...	26/08/2004	22/12/2005		HENRY PLANT AND EQUIPMENT	Drake Trailers				
05-01	MACTRANS 6x8 LH STEERABLE	17/12/2005	29/06/2006		MACTRANS	Drake Trailers		6x8 LH STEERABLE TRAILER CPA-30808	6822	6T9T254BF50
05-01-01	DRIVER INSTRUCTION	28/11/2006	28/11/2006		MACTRANS HEAVY HAULAGE	Drake Trailers				
06-02	RICHLANDS HEAVY HAULAGE 7x8 L...	26/08/2004	22/12/2005		RICHLANDS HEAVY HAULAGE	Drake Trailers		7x8 LH STEERABLE CPA-32022	7811	6T9T254BF50
06-03	DOOLAN'S HEAVY HAULAGE 6x8 L...	28/01/2006	29/07/2006		DOOLAN'S HEAVY HAULAGE	Drake Trailers		6x8 LH STEERABLE TRAILER CPA-30808	68000	6T9T254BF50
06-03-01W...	DOOLAN TRUNNION REPAIRS	20/02/2007	20/02/2007		DOOLAN'S HEAVY HAULAGE	Drake Trailers				
06-04	FERN BAY PLANT HIRE 3 x 4 DECK ...	26/08/2004	22/12/2005		FERN BAY PLANT HIRE	Drake Trailers		3 x 4 DECK WIDENER LD 15" CPA-11324	34323	6T9T254BF50
06-05	3x4 DECK WIDENER 15"	26/08/2004	22/12/2005		JOSLYN EXCAVATIONS	Drake Trailers		3 x 4 DECK WIDENER LD 15" CPA-11324	34322	6T9T254BF50
06-06	HI-HAUL TRANSPORT	12/04/2005	31/01/2006		HI-HAUL TRANSPORT	Drake Trailers		2 x 8 DOLLY CPA-9350	282090	6T9T234BF50
06-06A	HI-HAUL TRANSPORT 2 x 8 DOLLY J...	12/04/2005	31/01/2006		HI-HAUL TRANSPORT	Drake Trailers		2 x 8 JINKER CPA-9350	282030	6T9T234BF50
06-07	HI-HAUL TRANSPORT	13/04/2006	31/01/2006		HI-HAUL TRANSPORT	Drake Trailers		2 x 8 DOLLY CPA-9350	282100	6T9T234BF50