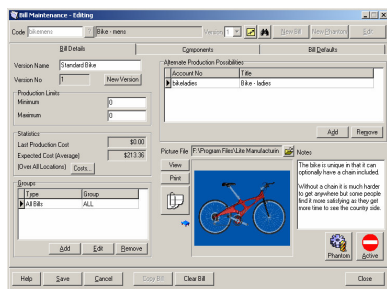


Advanced Manufacturing System (AMS)

Introduction

The Advanced Manufacturing System (AMS) has been developed by Concept Engineering Limited to manage the manufacturing process for businesses.



Bill of Materials

Bill of Materials

The AMS bill of materials/manufacturing functionality makes the task of maintaining detailed bills of components, sub-components and expenses for a product easy. Bills can be manually created within the system or imported from external data files.

The AMS maintains bills of materials with an easy-to-use hierarchical tree interface. In addition to stock items bills can include labour, outwork, non-stock resources (e.g. machinery), milestones, alternate options, phantom bills and general ledger "overhead" categories.

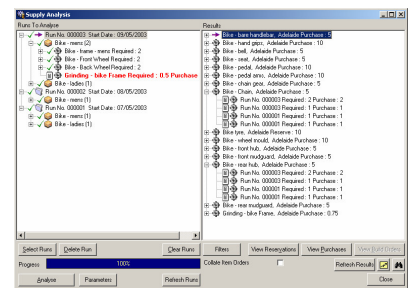
With the AMS, the user can produce accurate and informative reports detailing bill structures, expected costings, component requirements and production history.

produce recommendations for required work orders.

Materials Planning/Supply Analysis

Product "supply" is based on inventory stock levels, open purchase orders, lead times and components required.

One of the most critical and time-consuming aspects of manufacturing is managing the task of maintaining sufficient amounts of raw materials and components at all times.



Material planning

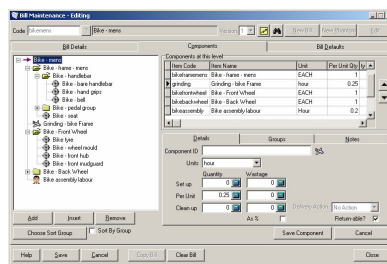
AMS modules

The AMS is made up of a number of modules. Each AMS module is designed to provide specific manufacturing functionality and to seamlessly integrate with the other modules. Modules can be purchased separately in accordance with individual business requirements.

The AMS modules are based around the core functionality of bills of materials/manufacturing for items that are manufactured by a business. Modules available include:

- Standard bill of materials/manufacturing
- Extended production management with demand analysis
- Supply analysis (material requirement planning)
- Bulk issues
- Job Entry
- Production quotation

The AMS assists with consistent quality production and planning, enables accurate actual consumption logging, efficient production planning and the analysis of plant and labour performance.



Outline of Bills

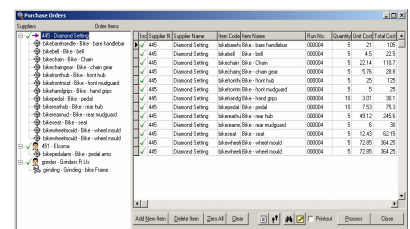
The AMS accommodates 'after-the-fact' recording of production. As progress in each work order/production is made, the component items used are automatically adjusted from inventory, and the finished products are automatically received into inventory.

Demand Analysis

Product demand is based on open sales orders and sales projections. A work order/production is created in the AMS to manage the production of finished products from components based on anticipated demand for the product.

The demand analysis module analyses product requirements in the accounting system by examining sales quotations, orders, deliveries, invoices, job quotations and other production runs to

The AMS supply analysis module helps manage the material requirement planning process. The module simplifies and speeds up the work processes of purchasing by analysing component demand and taking into account lead times for an inventory item.



Purchase orders for production

With the supply analysis module users can produce reports based on "action by" date to advise the purchasing manager which orders need to be placed, and can also raise purchase orders into the accounting system.

Flexible Production Management

Each production run can be for one or more BOM providing huge flexibility for the user. Default

